


Ball Transfer Unit A7104-16

Ball Units Series A7 - Wheel S/2

 -30 °C - +100 °C


swivels easily


wear resistant


shock proof


floor protective


weather proof

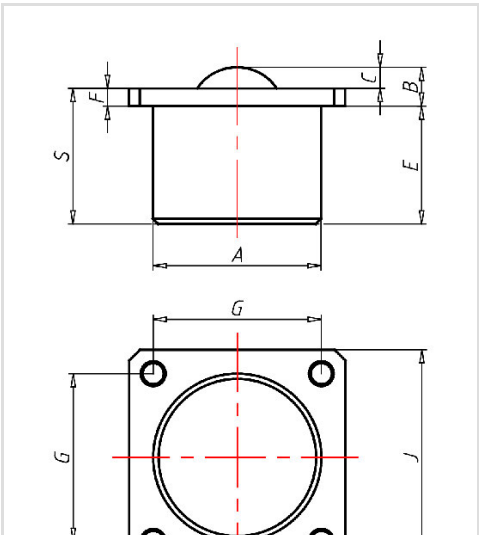
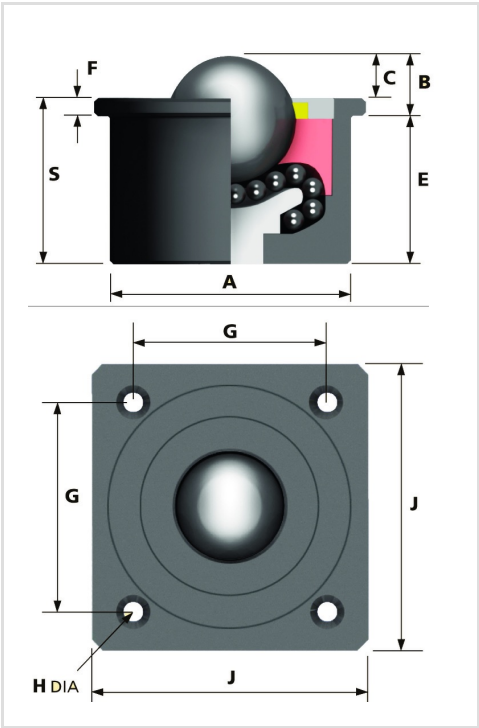
Wheel

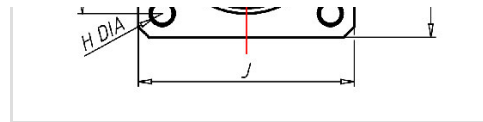
Ball: carbon steel or stainless steel

Units are machined using CNC machines
from one piece of steel

Hevi-Load units run on the re-circulating ball principle
The load ball rotates on a hardened bed of small balls

Ball Transfer Unit	
Series:	2
Ball-Ø mm:	12,7
Finish housing:	steel
Finish Balls:	stainless steel
Load Capacity kg:	35
Load capacity tested according to EN 12530 and EN 12527	
A mm:	23,8
B mm:	11,2
C mm:	3,5
E mm:	11,2
F mm:	3,2
G mm:	34,8
H mm:	3,6
J mm:	44,5
S mm:	19,1





Advantages

- ✓ Casing made of solid steel on the lathe
- ✓ units run on the re-circulating ball principle
- ✓ The load ball rotates on a hardened bed of small balls
- ✓ top plate with four fixing holes

©Copyright 2024 Rollenbau GmbH, www.rollenbau.at 29.04.2024

Applications

- Haulage way
- Assembly lines